

3 BEDROOM APARTMENT

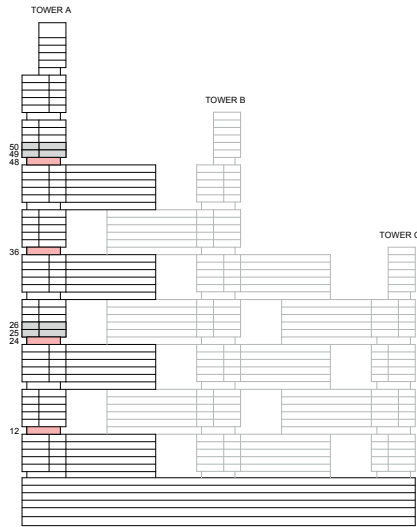
TYPE C (with store room and maid room + yard)

TOTAL SALEABLE AREA

SUITE = 1,708.66 SQ.FT.

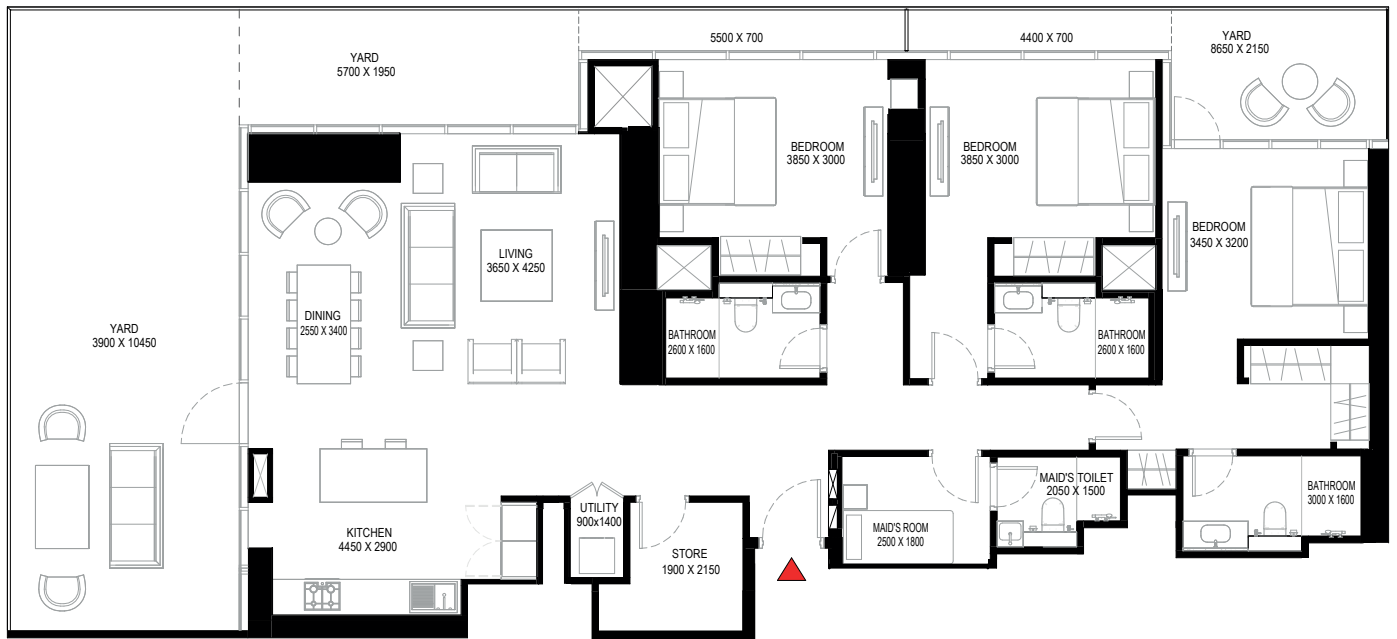
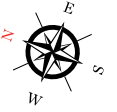
YARD = 782.88 SQ.FT.

TOTAL = 2,491.54 SQ.FT.



KEY ELEVATION

UNIT



List of unit numbers with this unit plan:

VIEWS

Downtown, Ras Al Khor, Creek, Golf Course, Water Body
A1206, A2406, A3606, A4806

Disclaimer: 1. All dimensions are in metric, measured to wall finishes. 2. All materials, dimensions & drawings are approximate. 3. Information is subject to change without notice, at developer's absolute discretion. 4. Actual area may vary from the stated area. 5. Drawing are not to scale. 6. All images used are for illustrative purpose only and do not represent the actual size, features, specifications, fittings and furnishings. 7. The developer reserves the right to make revisions/ alterations, at its absolute discretion, without any liability whatsoever.