

2 BEDROOM APARTMENT

TYPE G (with powder room + yard)

TOTAL SALEABLE AREA

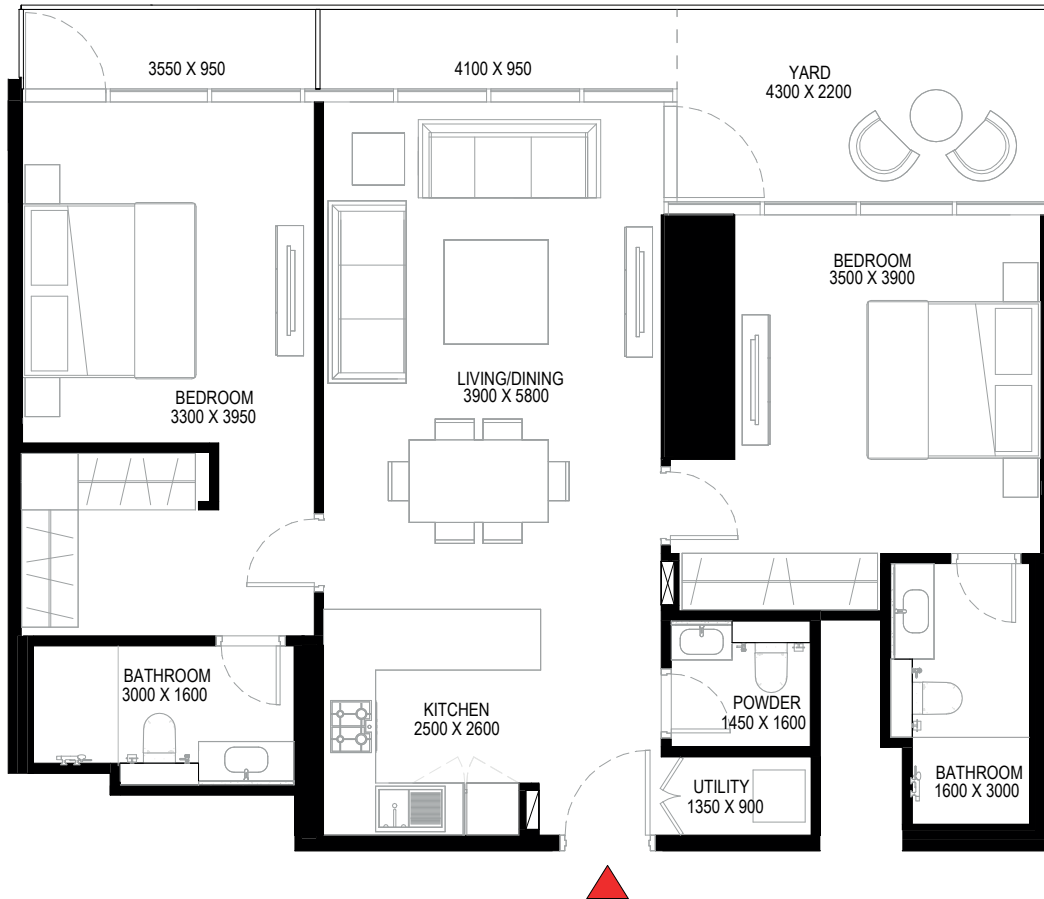
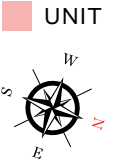
SUITE = 1,025.05 SQ.FT.

YARD = 184.82 SQ.FT.

TOTAL = 1,209.87 SQ.FT.



KEY ELEVATION



List of unit numbers with this unit plan:

VIEWS

Ras Al Khor, Golf Course, Amenities
A1209, A1809, A2409

Ras Al Khor, Golf Course
A3009, A3609, A4209, A4809, A5410

Disclaimer: 1. All dimensions are in metric, measured to wall finishes. 2. All materials, dimensions & drawings are approximate. 3. Information is subject to change without notice, at developer's absolute discretion. 4. Actual area may vary from the stated area. 5. Drawing are not to scale. 6. All images used are for illustrative purpose only and do not represent the actual size, features, specifications, fittings and furnishings. 7. The developer reserves the right to make revisions/ alterations, at its absolute discretion, without any liability whatsoever.